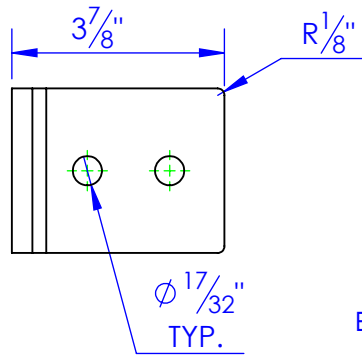
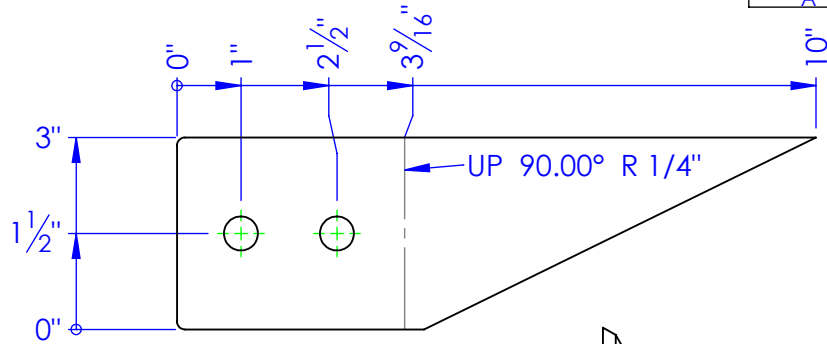
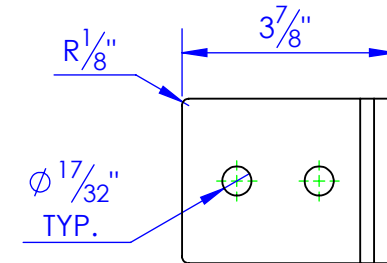
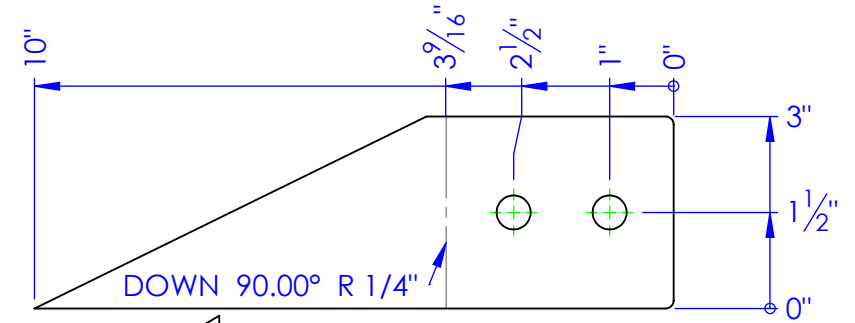
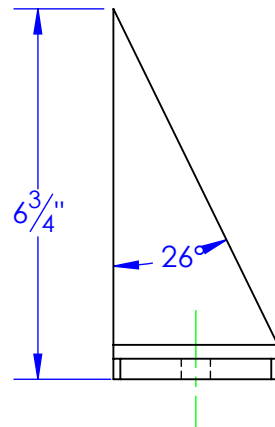
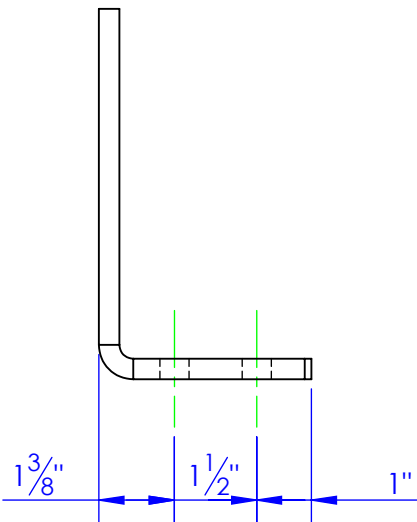
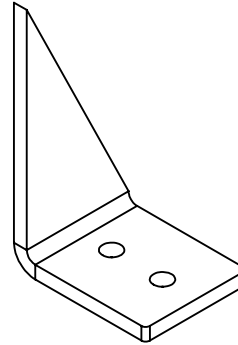


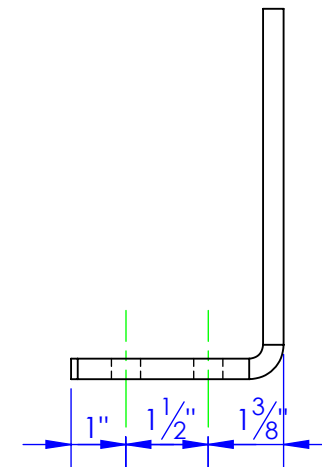
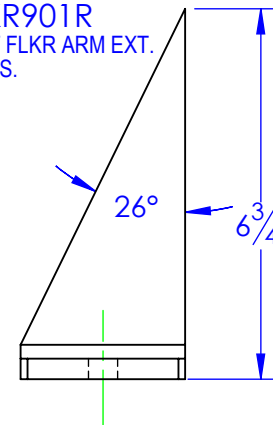
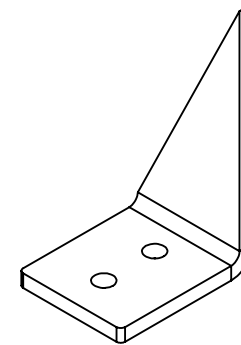
REV.	REVISIONS	DATE	APPROVED
A	UPDATED TO NEW STANDARD DWG FROM AE-FLKR901	12/10/2012	



FP-AE-FLKR901L  
ENGAGEMENT POINT FLKR ARM EXT.  
2.19 LBS.



FP-AE-FLKR901R  
ENGAGEMENT POINT FLKR ARM EXT.  
2.19 LBS.



**PROPRIETARY AND CONFIDENTIAL**  
THE INFORMATION CONTAINED IN THIS  
DRAWING IS THE SOLE PROPERTY OF TRIPLE  
C INC. ANY REPRODUCTION IN PART OR  
AS A WHOLE WITHOUT THE WRITTEN  
PERMISSION OF TRIPLE C INC. IS PROHIBITED.

DIMENSIONS ARE IN INCHES TOLERANCES: FRACTIONAL $\pm 1/16$ ANGULAR: MACH $\pm 1$ BEND $\pm$ TWO PLACE DECIMAL $\pm 010$ THREE PLACE DECIMAL $\pm 005$	
MATERIAL	--
DO NOT SCALE DRAWING	

NAME	DATE
DRAWN HEATH	2/20/2013
PART #	SEE DWG #
ASM #	
COMMENTS: ENGAGEMENT POINT HYDRA FLKR EXT.	

P.O. BOX 248,  
SABETHA, KS 66534

**TRIPLE C**  
INC.

SIZE <b>A</b>	DWG. NO. <b>40-2503</b>	REV. <b>A</b>
SCALE: 1:3.5	WEIGHT: --	SHEET 1 OF 1